

Sheraton Maui Resort & Spa

October 26, 2020

M-L4YIET2

# Kiwanis Cal-Nev-Ha District Convention Aug2024



Timothy Cunning

Director of Service Leadership Programs - Kiwanis



# Kiwanis Cal-Nev-Ha District Convention Aug2024

Aloha Timothy,

I am very excited to hear that Sheraton Maui Resort & Spa is in consideration for the Kiwanis Cal-Nev-Ha District Convention Aug2024. Sheraton Maui Resort & Spa has much to offer to make this program special and memorable for your attendees.

The following pages will detail the considerations for planning your event and why we believe Sheraton Maui Resort & Spa is the ideal choice for the Kiwanis Cal-Nev-Ha District Convention Aug2024.

Our goal is to exceed your expectations and we look forward to partnering with you on a successful event.

Mahalo nui loa,  
Jeremy Decker





# Marriott's Commitment to Clean

## Our Approach

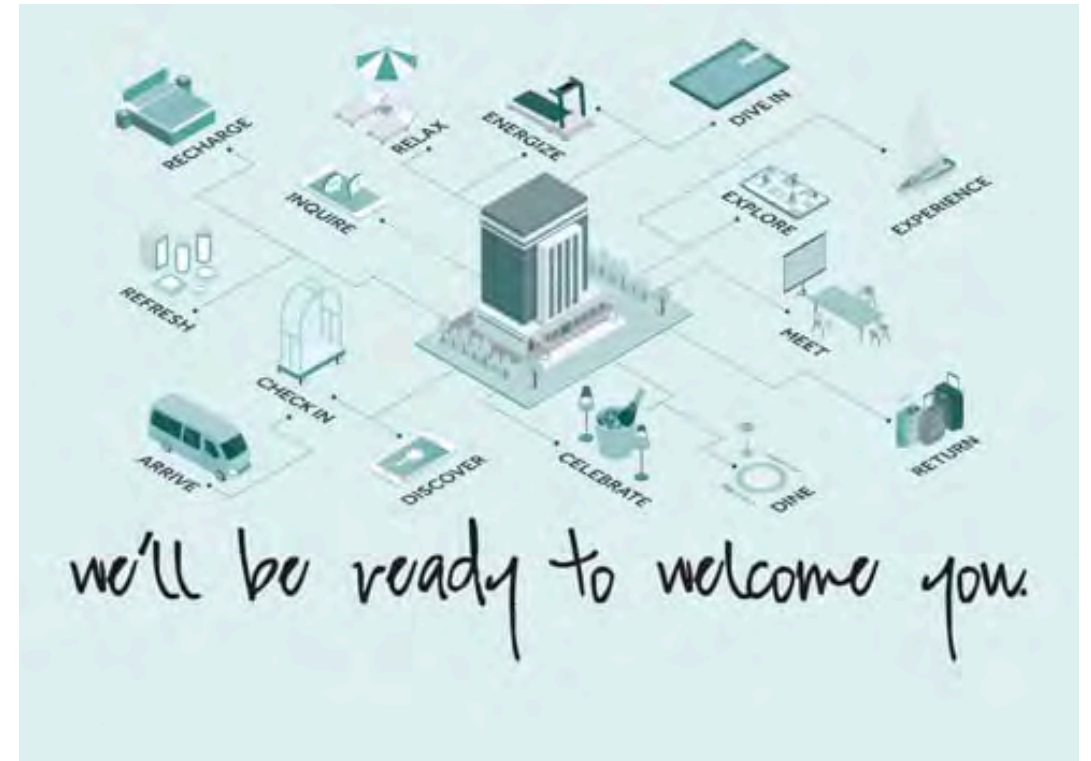
Since our founding over 90 years ago, taking care of guests and associates has been at the heart of Marriott's approach to hospitality. This commitment informs our decisions as we adapt to the challenges presented by COVID-19.

We understand that people are thinking about travel differently now. We are, too. That's why we have further elevated our cleaning standards and protocols to address the unique challenges presented by the current environment and focus on the well-being of our guests and associates.

## We'll Be Ready to Welcome You

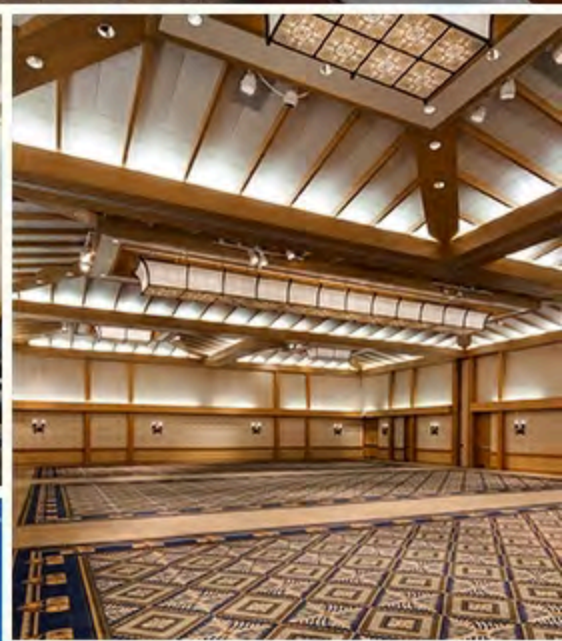
This 'new normal' may evolve and change over time to reflect government guidance and new societal expectations. What will not change, though, is our commitment to maintaining a clean environment for hotel associates, guests and customers.

We recently launched the Marriott Global Cleanliness Council which includes both in-house and outside experts in hospitality, epidemiology, sanitation and protective health and hygiene technology. Working in close consultation with these experts, we've established a set of global standards as well as hundreds of specific cleaning protocols for the physical spaces in our hotels. At our hotels, these scientifically supported practices and innovations are overseen by a Cleanliness Champion – the on-property cleaning and hygiene expert accountable for the execution of the hotel's Commitment to Clean program.



**MARRIOTT'S COMMITMENT TO CLEAN**





It is our mission to provide exclusive options that are truly remarkable, aligned with your vision and curated to achieve your key objectives.

The information highlighted throughout this multi-media presentation is the beginning of doing just that. You will see that we have outlined room rates, concessions, a meeting agenda and information about Sheraton Maui Resort & Spa; all designed exclusively for Kiwanis.





## Rooms, Rates & Dates

Room Block 8/ 5/24 - 8/12/24		Mon 8/5	Tue 8/6	Wed 8/7	Thu 8/8	Fri 8/9	Sat 8/10	Sun 8/ 11	Total
Run of House	\$359	1	5	25	175	225	150	5	586

We are pleased to offer availability on a first option basis; however, we are not holding space and so this proposal is only valid for a short time. Rates and availability are subject to change until an agreement is in place and executed.

All concessions are based on achieving proposed rooms revenue and negotiated Food & Beverage minimum.

Hawaii State Transient Accommodations Tax is 10.25% and General Excise Tax is 4.166%. Taxes apply to all rates for single or double occupancy and are subject to Daily Resort Charge per room, per day, and to Third/Fourth Person Charge of \$80.00 + tax per each additional guest, per night 18 years or older per night



## Resort Fee Inclusions

Sheraton Daily Resort Charge: \$35 plus tax, per room, per night.

Resort Charge Inclusions (inclusions and rate subject to change without notice):

- Unlimited wireless high-speed internet access in guestroom, lobby, pool area and Hoku Rotunda
- Valet parking on day of arrival (first night only)
- Resort water service: two eco-friendly refillable water pouches with water fill stations throughout property
- Scheduled shuttle service to historic Lahaina town
- Scheduled Ka'anapali Resort shuttle service
- Pool floats
- Poolside charging station
- Raw Elements reef-safe sunscreen dispensers throughout property
- Sheraton Maui tote bag
- Daily Hawaiian cultural activities (please see activity schedule)
- Daily marine educational talks and activities with marine naturalist from Maui Ocean Center

*Occupancy + Gratuities: There is no additional charge for children (18 years and under) when accompanied by a paying adult. Porterage is only applicable when arriving as a group via coach or shuttle; fee is \$8.50 round trip, per person plus tax, additional movements at \$4.25 plus tax.*

*Housekeeping gratuity is a recommended \$2 optional and at guest discretion.*





# Concessions

Sheraton Maui Resort & Spa is confident we can meet and exceed your needs for the August 5, 2024 Kiwanis Cal-Nev-Ha District Convention Aug2024.

We are excited about this opportunity and we hope you are too; and to get things started, we are prepared to extend the following value incentives:

- Discounted Resort fee of \$25
- Waived Room Rental with a \$65,000 Food and Beverage Minimum
- 1 complimentary room night for every paid 45 guest room nights
- (5) Staff rooms at 30% off rate
- \$10 Rebate to the Master
- Complimentary (1) hour welcome reception with fresh flower leis for guests
- 10% Discount off selected Banquet Menu items
- 10% Discounts on Audio Visual equipment through PSAV
- 3 Day pre/post group rates, based upon availability
- (10) Ten Complimentary amenities for VIPs

We would be delighted to present a total concession package for your consideration after we discuss and have a better understanding of your needs.

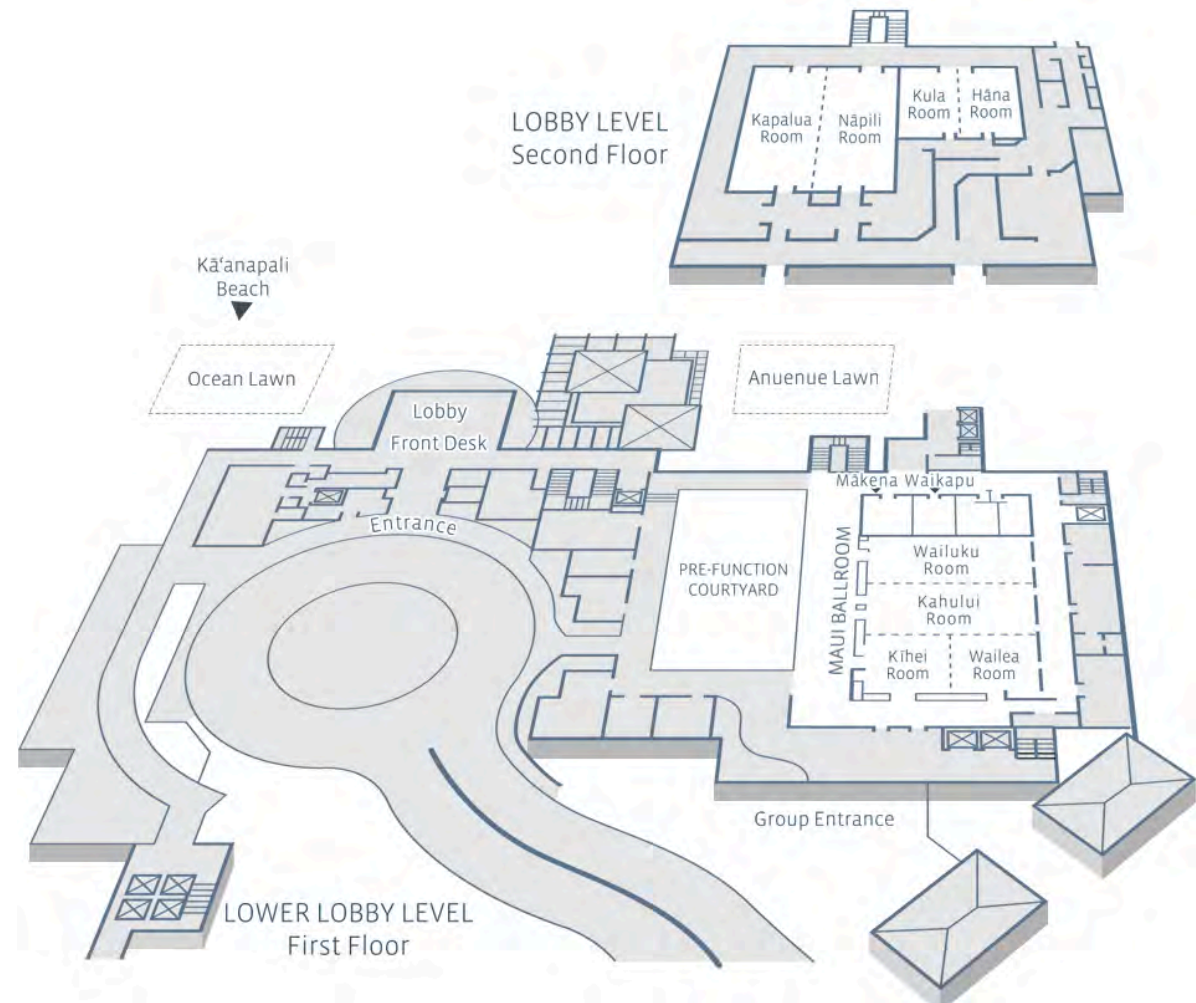


## Meeting Space

The Sheraton Maui Resort & Spa has beautiful indoor and outdoor space to fit your needs:

- 12 Event Rooms
- 42,307 sq ft Total Event Space
- 750 Capacity Largest Space
- 6,000 sq ft Exhibit Space

Learn more about the ease of navigation and all we have to offer by browsing our attached floor plans.





# Food & Beverage Minimums

Sheraton Maui Resort & Spa provides a premier culinary experience with an award-winning team, comprised of chefs with a wide range of experience and specialties. Our catering staff is recognized for its exceptional service and innovation.

Your food and beverage minimum will be determined based on your program specifications and before 4.166% tax and a 25% service charge.

Below is a summary of our current Food & Beverage pricing guidelines:

Break - AM	\$27.00
Break - PM	\$27.00
Breakfast - Continental	\$34.00
Breakfast - Buffet	\$50.00
Breakfast - Plated	\$37.00
Lunch - Buffet	\$57.00
Lunch - Plated	\$62.00
Dinner - Buffet	\$87.00
Dinner - Plated	\$102.00
Reception - Food	\$65.00
Reception - Beverage	\$32.00





## Resort Overview

Located on 23 oceanfront acres, Sheraton Maui is the most historic property in Ka'anapali, elevated with a newly-renovated guestroom experience. When you choose our resort for Kiwanis Cal-Nev-Ha District Convention Aug2024, you can rest assured knowing that our team will have you covered throughout your visit to Maui, whether you're on-site or off-site.

Everything here has been designed with your meeting needs in mind, from the rooms and abundant number of suites to the to function spaces that can be tailored to your meeting needs.

You can be sure we will help Kiwanis take full advantage of our abundant indoor and outdoor space, including our stunning ballrooms, boardrooms and entertainment suites.

We are the perfect choice for your Kiwanis Cal-Nev-Ha District Convention Aug2024 and the breathtaking views found throughout the resort's grounds and event venues will ensure that Sheraton Maui is Kiwanis's most memorable partner location.

**RESORT FACT SHEET**







## Pu'u Keka'a (Black Rock)

Let Sheraton Maui Resort & Spa be your gateway to legendary Black Rock in Ka'anapali, once a playground for Hawaii's royalty; where work and play seamlessly coexist to make the most productive and memorable event Kiwanis will host.

Allow us to share the rich history, cultural activities and vibrant experiences that surround Sheraton Maui Resort & Spa, including our nightly Cliff Dive ceremony, a tradition dating back to Hawaiian royalty and Chief Kahekili.







## Rooms & Suites

Rediscover the legend of Ka'anapali at Sheraton Maui Resort & Spa in one of our 508 guestrooms, 44 of which are spacious suites. 83% of our rooms have ocean views with all rooms offering an elegant stay.

Amenities include Sheraton Sweet Sleeper® Beds, a plush armchair with ottoman, beautiful wood furniture, flat-screen TV, in-room safe, in-room coffee/tea, refrigerator, and full bath amenities and all come equipped with fully furnished lanai's and wireless internet.

Whether it is run-of-house or the added incentive of our plentiful suite inventory, we can ensure Kiwanis that your attendees as well as VIP's with Marriott Bonvoy™ status feel pampered and recognized!





## Restaurants & Bars

**Teppan-yaki Dan:** Skilled chefs expertly prepare fresh lobster, steak, and more, right before your eyes. Sakes and fine wines are the perfect complement.

**The Sandbar:** Guests can greet their stay in paradise with a toast while sharing a curated menu of pupu (appetizers) infused with island flavors. Also offers morning service, proudly brewing Starbucks coffee and serving a selection of housemade pastries and breakfast bites.

**Mai Tai:** Steps away from Ka'anapali Beach, Mai Tai is an ideal setting for sipping on your favorite umbrella drink and enjoying tasty poolside bites like poke bowls and salads for lunch, and open-air dining at night.

**Cliff Dive Grill:** Serves tasty grilled fare like burgers and tacos plus a range of tempting beverages, right on Ka'anapali Beach. Every evening at sunset, take in the nightly torch lighting and cliff dive ceremony, and enjoy hula dancing and live music.

**Coral Reef Breakfast:** Start your day with a delicious a la carte breakfast, brunch or our popular breakfast buffet with make-your own omelets, waffles, pastries and more.

[RESORT CULINARY GUIDE](#)





# Activities

Down time can be as simple as relaxing at Ka'anapali Beach or at the resort's lagoon style pool, organizing an impromptu break-out session at one of our signature gathering areas, or taking in all the action while meeting with colleagues at Cliff Dive Bar.

When Kiwanis Cal-Nev-Ha District Convention Aug2024 attendees are ready to explore, the excitement is all just steps away, on the soft sand of Ka'anapali Beach:

- Maui's premier beachfront shopping center, Whalers Village is a short stroll down our beach path.
- Explore the waterfront restaurants, shopping, art galleries, and nightlife of historic Lahaina Town.
- Venture to Hana, with lush tropical landscapes and cascading waterfalls.
- Visit an array of local farms and distilleries on the slopes of Haleakala.





## Maui Nui Luau

Sheraton Maui Resort & Spa invites guests to discover the remarkable stories, history, and culture of the Valley Isle and Ka'anapali through the songs and dances of Maui and the Pacific at the Maui Nui Lu'au.

Situated beachfront on award-winning Ka'anapali Beach, the Maui Nui Lu'au shares the music, dance and history of the islands right here at the foot of the famous cliff diving point, Pu'u Keka'a, or Black Rock as it is commonly called. World renowned Polynesian entertainment producer Tihati Productions presents the best in Hawaiian & Polynesian song and dance, including the spectacular fire knife dance. Enjoy an all-you-can-eat Lu'au buffet, Hawaiian arts, crafts and games, and experience an authentic Hawaiian Imu Ceremony.



## Nightly Cliff Dive

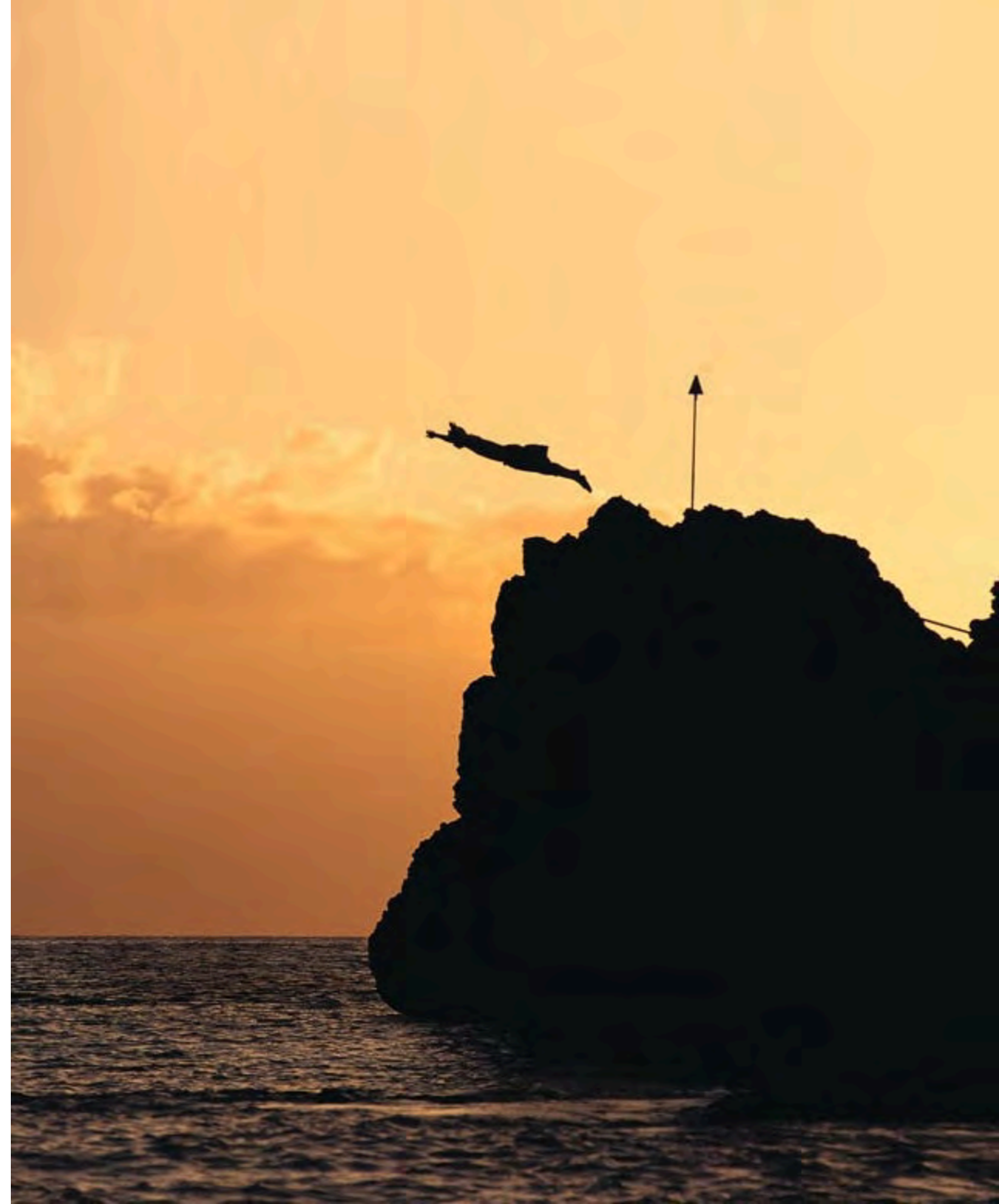
In Hawaiian tradition Pu'u Keka'a, "hill of rolling stones," is a sacred site with a history dating back hundreds of years. As day transitions to night, Sheraton Maui Resort & Spa retells the story of Chief Kahekili through a nightly cliff dive ceremony, a 50-year-old tradition which has drawn visitors from around the world.

On January 23, 1963 Sheraton Maui Resort & Spa opened its doors to the world. In honor of Hawaii's royalty that once called Ka'anapali home, the nightly tradition of torch lighting and cliff diving began.

Just before sunset each evening, a young warrior dressed in the traditional "malo" (loincloth) sets torches aflame shedding light upon the lush lawns of Sheraton Maui Resort & Spa.

The story of Chief Kahekili and Pu'u Keka'a is retold at the Cliff Dive Bar as the warrior journeys across the white sands of Ka'anapali Beach, lighting the torches set on the crest of Black Rock.

He traces an ancient path to the summit of Pu'u Keka'a, utters a blessing to his ancestors, offers his torch and flower lei to the ocean below, and finishes with a courageous dive into the rolling surf of the Pacific.







## The Spa at Black Rock

Sheraton Maui Resort & Spa is committed to helping your guests maintain their fitness routines while on the road. Our fitness center will fuel fast and focused workouts, delivering maximum results in minimum time.

We also invite your guests to experience the ancient healing of Pu'u Keka'a. Harmony and well-being for the mind, body and spirit, inspired by the culture and traditions of Hawaii, brought to you with Aloha.

The Spa at Black Rock will treat your guests to an infusion of soothing treatments, using natural products that draw on ocean plants and essential oils.







## Golf Nearby

If your guests are looking to test their mettle on Maui, the Ka'anapali Golf Courses: Royal and Kai are waiting in our backyard.

### **Ka'anapali Royal (North)**

Stretching 6,700 yards, this par 71 course opened its lush fairways in 1962 and will challenge your club selection and putting skills. The course begins at sea level with a par 5 hole extending 550 yards and hugs the shoreline before winding its way to the West Maui Mountain foothills. Arnold Palmer called the 18th hole (par 4) one of the best and most challenging finishing holes he'd ever played. The 449 yard hole plays longer than it looks, hugging the brackish water canal the entire length of the fairway and green, making it a truly memorable last hole.

### **Ka'anapali Kai (South)**

Originally created as an executive course before renovations — this 6,400 yard, Par 70 course is a forgiving golf course with subtle, undulating greens that accommodate all levels of play. The land originally housed a sugar cane plantation, and players will see the Sugar Cane Train (now used for tours) steam past several holes. Landscaped trails feature native flowers like hibiscus, bougainvillea, and plumeria; while Norfolk pines and coconut trees border many fairways. Natural canals, gulches, and lava rock boundaries all add to the undeniably exhilarating surroundings.

For more golf, we can help make arrangements for your group to play the Troon Golf® Kapalua Plantation Course which is just 8 miles down the road.

### **Kapalua Plantation Course**

Consistently ranked as the #1 golf course in Hawaii, playing The Plantation Course is sure to be on every golfer's bucket list. Designed by Ben Crenshaw and Bill Coore, the course was designed on a grand scale in keeping with its location on the slopes of the West Maui Mountains and offers dramatic ocean views from virtually every hole. Its lengthy 7,411 yard par 73 layout challenges the pros but it's wide fairways and generous greens make it very playable for the average golfer. With dramatic elevation changes, this course offers plenty of downhill tee shots. You'll feel like one of the pros when - with the aid of the aggressive slope of the 18th fairway - you will enjoy hitting one of the longest drives of your life.





## Meeting Resources

- Spark creativity with meeting spaces designed for you; we offer endless options to maximize our indoor and outdoor event space.
- The 6,560 sq. ft. Maui Ballroom accommodates 600 guests and is divisible to meet Kiwanis Cal-Nev-Ha District Convention Aug2024's specific needs.
- Our premier 12,000-square-foot Ocean Lawn is the largest outdoor event space in Ka'anapali.
- Keep your guests focused with delicious catering, ranging from coffee breaks to sit-down meals.
- Our talented conference services team can craft team building events and unique arrivals for groups.
- Post-meeting, you and your colleagues can stroll down our soft sand beach to explore the best of Maui.





## Awards & Accolades

Sheraton Maui Resort & Spa prides itself on delivering superior quality and exceptional customer service.

We are honored to have been recognized by our community, including guests, industry insiders and established travel and hospitality publications.

See below for some of our most recent awards and accolades:

- 2019 Condé Nast Traveler's 13 Best Resorts in Maui
- 2019 Forbes Magazine – Best Hotels in Maui
- 2017 Conde Nast Traveler's Readers' Choice Awards – Top 30 Resorts in Hawaii
- 2017 Apple Vacations, Golden Apple Award
- 2016 Hawaii Magazine Readers' Choice Awards - Best Hotel/Resort for a Long Vacation (5+ nights)
- 2016 Hawaii Magazine Readers' Choice Awards - Best Mid-Range Hotel/Resort
- 2016 Hawaii Magazine Readers' Choice Awards - Top 10 for Best Hotel/Resort for Families, Best Hotel/Resort for a Romantic Getaway and Best Hotel/Resort with Best Aloha Spirit







## Catering

Sharp minds are fueled by healthy food and all palates will delight in our delicious, Hawaiian-inspired menus.

Start with an appetizer such as petite snow crab cakes or kalua pork on a taro crostini before moving on to delectable main courses like lemongrass-crusting Hawaiian catch and barbecue baby back pork ribs.

Our culinary team will work with you to create menus that reflect both local authenticity and inspiration from around the world.

[BANQUET MENU](#)



## Booking Tools

### Attendee Reservations

Unique complimentary reservation links that make it easy for your meeting attendees to reserve their rooms:

- Shared in an email or embed in a website.
- Personalized with your group name, event dates and special rates.
- Displayed in multiple languages on Marriott domains worldwide.

### Group Lists

Simply provide an attendee list and we will make reservations for all of them.

### Rooming Lists

Receive reports showing which attendees have reserved rooms and when they plan to arrive.

### Mobile Check-In

Attendees can check in before their stay, receive instant alerts when their room is ready and check out by skipping the front desk.







## Audio Visual Services

From helping small gatherings create a great impact to amplifying a stage experience for hundreds of attendees, our event technology enhances every image, note and nuance of your important communication.

Sheraton Maui Resort is pleased to provide in-house audio visual services through PSAV®. Although outside vendors are allowed, we ask that you give [PSAV® Presentation Services](#) the opportunity to place a competitive bid for all of your audio-visual needs.



## Airport Accessibility & Transportation Options

The Kahului Airport (OGG) is approximately 27 miles or 45 minutes from Sheraton Maui Resort & Spa. The Kapalua Airport (JHM) is 8 miles or 10 minutes.

There are several airport transportation options available to you. Please note that the below estimated rates are one-way transfers to / from OGG.

\$60.00	Shuttle Service (Speedi Shuttle, shared)
---------	--

\$85.00-\$100.00	Taxi Fare
------------------	-----------

Rental Cars	Alamo, Avis, Budget, Dollar, Hertz, Enterprise, National, Thrifty
-------------	---





# Planning Your Event

Timothy,

We appreciate the opportunity to host Kiwanis Cal-Nev-Ha District Convention Aug2024. Your dedicated event team will stay focused on your needs and do everything possible to meet and exceed expectations.

Myself and the entire staff of Sheraton Maui Resort & Spa are confident we are the perfect match and we are excited to work together to create a spectacular event.

If there is more information we can provide to guide you in the process, please let us know.

Warmest Aloha,  
Jeremy Decker

Senior Sales Executive  
Sheraton Maui Resort & Spa  
808-856-5831 | [Jeremy.Decker@marriott.com](mailto:Jeremy.Decker@marriott.com)

