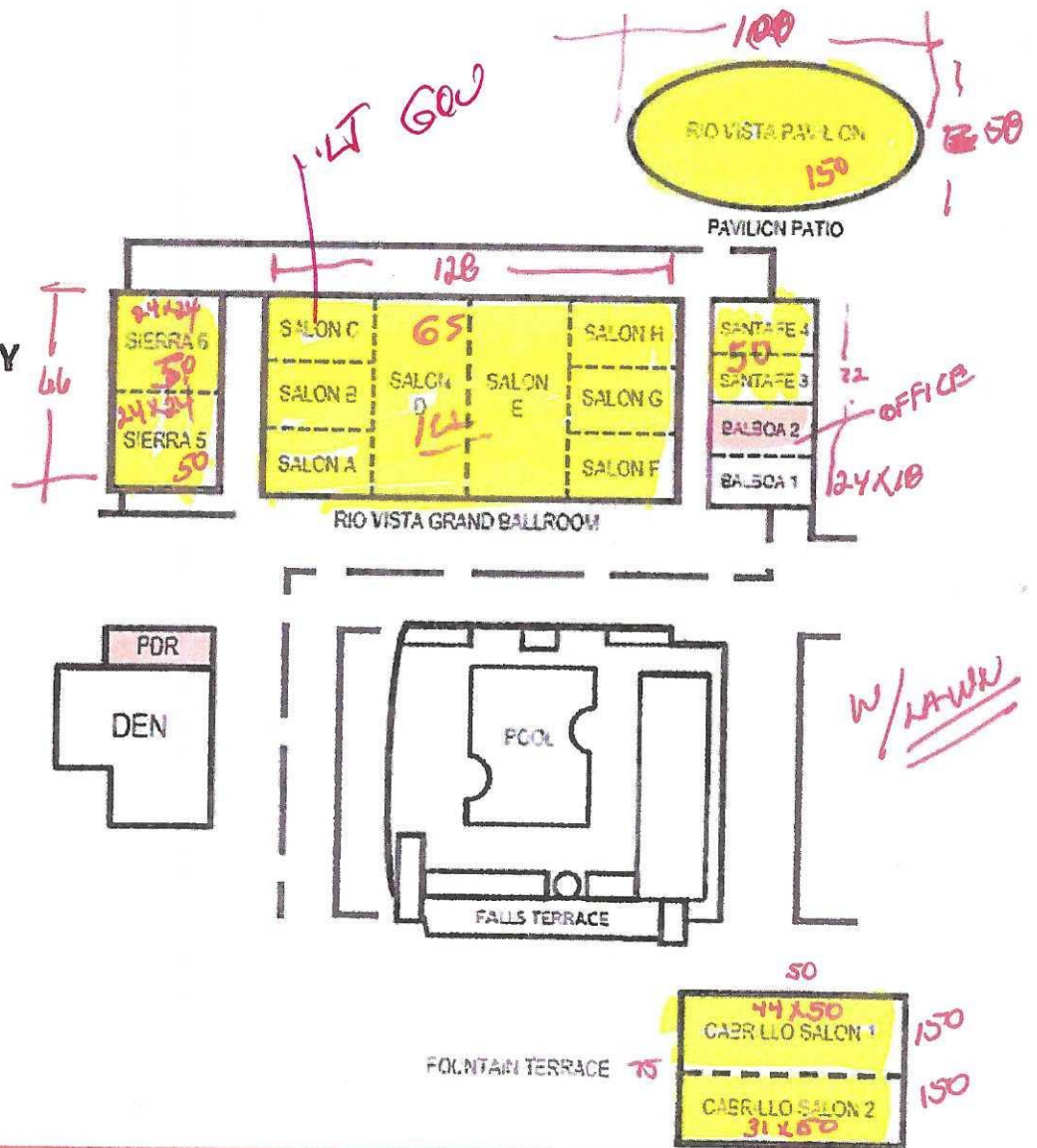


**MARRIOTT
SAN DIEGO
MISSION VALLEY**



MEETING ROOM NAME	DIMENSIONS	SQ. FT	THEATER	CLASSROOM	CONFERENCE	U-SHAPE	RECEPTION	BANQUET
Salons A, B, C, F, G & H (Each)	32x22x14	704	90	40	30	35	80	50
Salons D & E (Each)	32x66x14	2,112	275	130	-	-	250	150
Rio Vista Ballroom (Salons A-H)	128x66x14	8,448	1,100	500	-	-	900	800
Balboa 1&2, Santa Fe 3&4 (Each)	24x18x12	432	40	25	30	24	50	30
Balboa 1&2, Santa Fe 3&4 (Combined)	24x36x12	864	60	40	32	30	100	50
Sierra 5&6 (Each)	24x24x12	576	50	32	24	25	55	40
Sierra 5&6 (Combined)	24x48x12	1,152	100	62	43	44	120	90
Rio Vista Pavilion	100x58x25	5,800	400	240	-	-	450	350
Cabrillo Salon 1	44x50x10	2,200	150	100	-	-	175	150
Cabrillo Salon 2	31x50x10	1,550	98	65	27	27	100	80
Cabrillo Salon 1&2 (Combined)	75x50x10	3,750	240	175	30	30	300	200
Ashley's Room*	14x100x12	1,400	60	42	42	42	100	60
PDR (Private Dining Room)	-	450	-	-	-	-	30	20
Pavilion Patio	-	4,292	-	-	-	-	200	100
Pool	-	2,800	-	-	-	-	300	140
Fountain Terrace	-	3,000	-	-	-	-	150	120
Falls Terrace	-	686	-	-	-	-	30	20